



AZL Partnership Model

Services | Approach | Benefits

AZL

Aachen GmbH

Excellence in lightweight production



Your Link Between Research and Industry

OUR MISSION

AZL consists of two separate entities: The Aachen Center for Integrative Lightweight Production (AZL) of RWTH Aachen University addresses teaching activities as well as basic research and development of lightweight products, materials, production processes and systems and has access to the latest full-scale machines and automation systems. As a service provider partnering with companies in the field of lightweight production technology, AZL Aachen GmbH offers industrial services in the areas of engineering, consultancy and project management, networking and human resources marketing, among others. Within the AZL Partnership, the AZL Aachen GmbH makes the technology transfer and RWTH Aachen's unique range of services available to its customers.

Together as AZL, we are the one-stop shop for lightweight production technology and offer holistic and cross-industry solutions for your business.

OUR SERVICES WITHIN THE AZL PARTNERSHIP

Annual
Partner Meeting

Workshops

Joint Partner
Projects

Acquisition of
Public Funding

Networking

Marketing, PR,
Human Resources

Our Research Partners

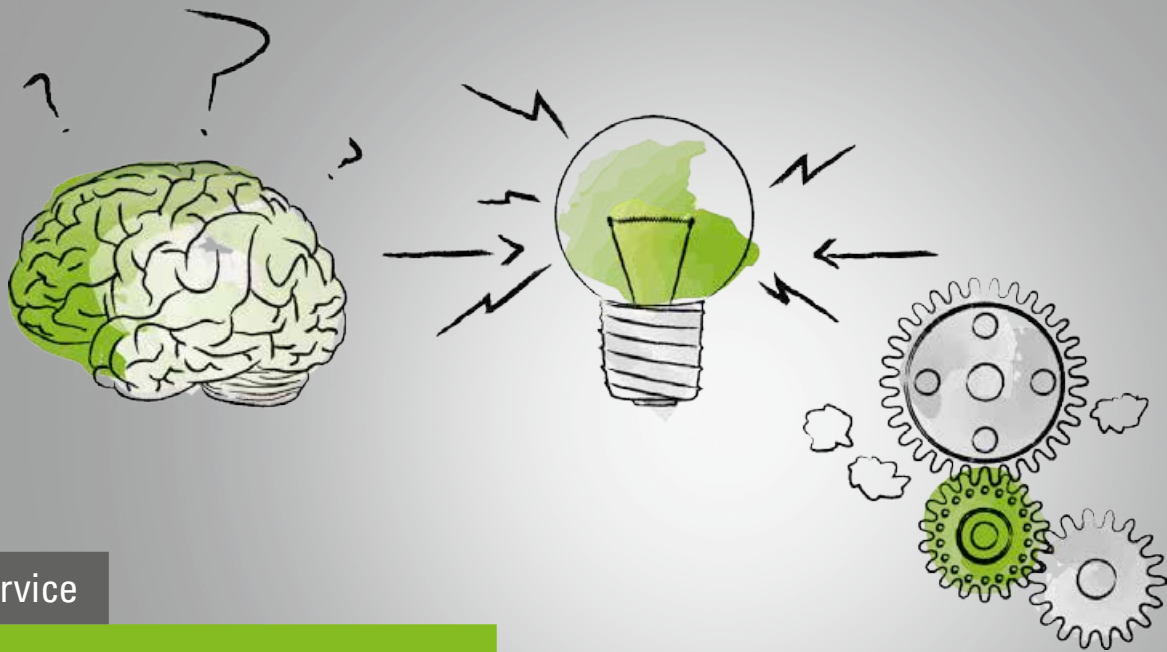
Entire Lightweight Value Chain



Aachen Campus Melaten

© rha, reicher haase assoziierte GmbH





Service

Annual Partner Meeting

APPROACH

- One Annual Partner Meeting per year
 - Review of realized and definition of further AZL partnership activities (workshops, projects, etc.)
- Keynote presentations:
 - Innovations of AZL Partner Institutes
 - Innovations of AZL Partner Companies
- Definition of joint partner projects
- Definition of minimum five workshops per year
- Results and conclusions of realized workshops and projects
- Networking with more than 50 national and international AZL Partner Companies



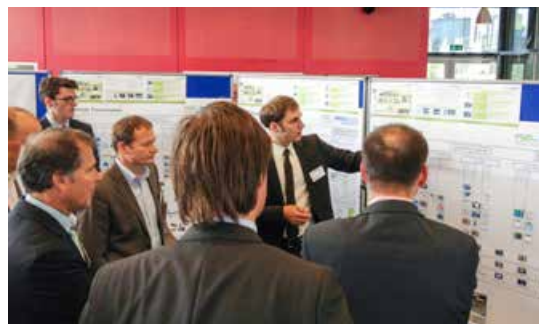
YOUR BENEFITS

- Presentation of your innovations to business partners
- Networking with AZL Partner Companies
- Definition of research projects and workshops



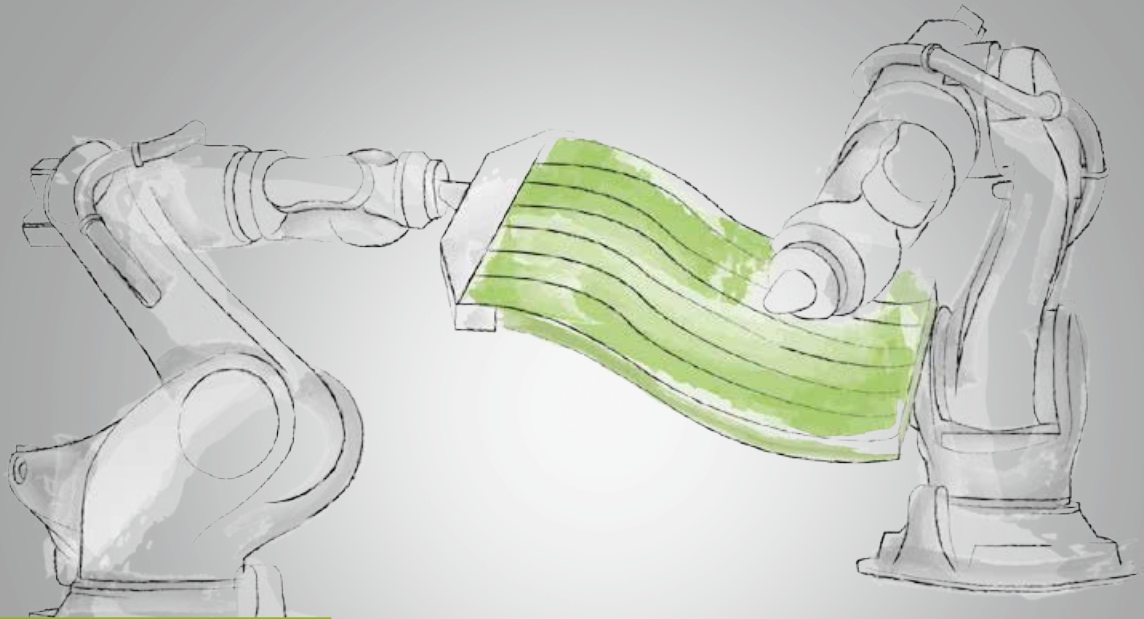
APPROACH

- At least five workshops per year
- Workshop topics are defined by AZL Partner Companies, e.g.:
 - High-speed RTM Matrices
 - Thermoplastic Tape Qualification: Material and Processing
 - Back-Moulding of Thermoplastic Tailored Preforms
 - New Designs for Low-cost Double Belt Presses
 - International Lightweight Research Landscape
 - Joining Technologies
- Definition of joint partner projects, e.g. Tape Qualification and Benchmarking



YOUR BENEFITS

- Definition of joint partner projects
- Possibility to define new industrial standards (e.g. RTM specifications, tape quality)



Service

Joint Partner Projects

APPROACH

- Definition of pre-competitive Joint Partner Projects within
 - Annual Partner Meeting
 - Workshops
- Example 1: Tape Qualification and Benchmarking
 - Project start: November 2014
 - Project duration: 12 months
 - 7 industrial partners: OEM, tape and fiber manufacturer, chemical Industry
- Example 2: Development of new Concepts for cost-efficient Double Belt Presses
 - Project start: November 2014
 - Project duration: 12 months
 - 7 industrial partners: Press manufacturer, chemical industry, steel Industry



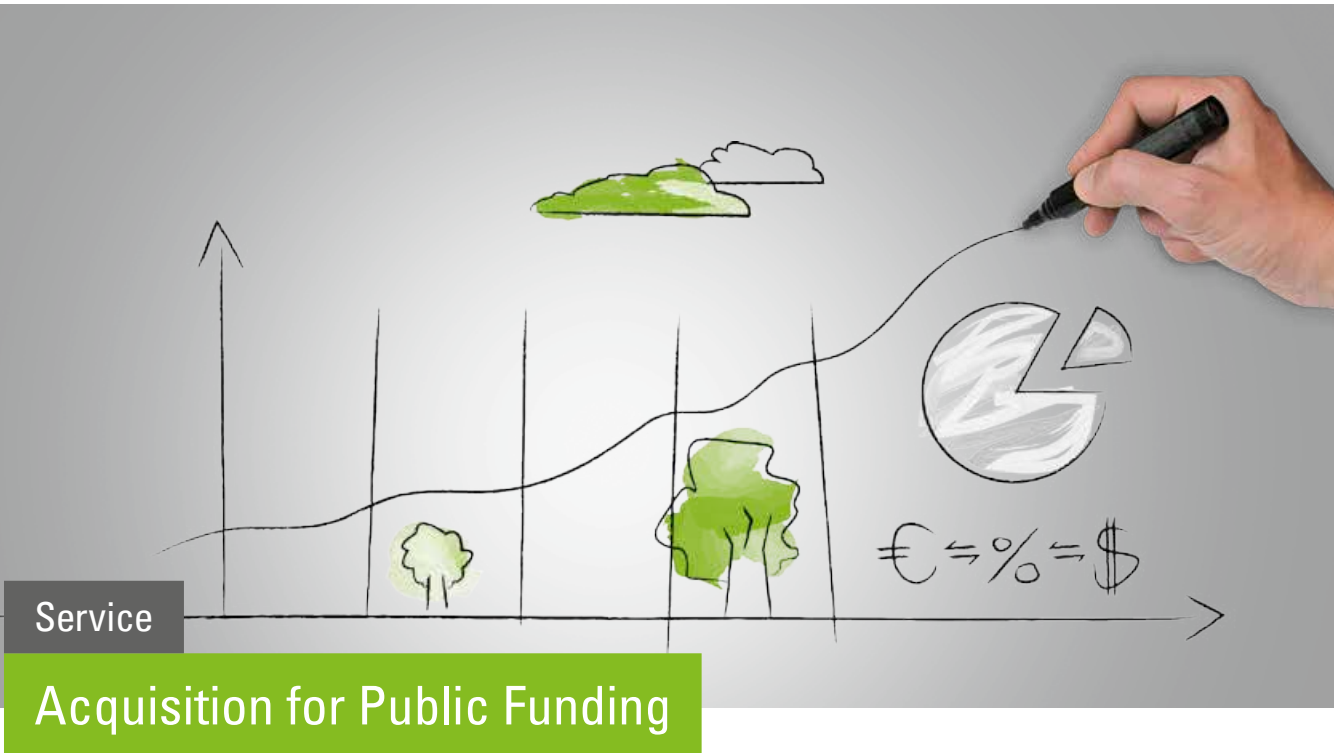
© Fraunhofer IPT



© Held Technologie GmbH

YOUR BENEFITS

- Exclusive joint partner projects with AZL Partner Institutes and AZL Partner Companies



Service

Acquisition for Public Funding

APPROACH

- Risk-reduction by identification of available public funding possibilities for your demand (e.g. BMBF, BMWI, EU, cross-border funding, etc.)
- Identification of potential international partners and consulting on focusing research topics
- Consulting how to use the AZL infrastructure as a technology platform
- Direct contact via the AZL Aachen GmbH partners to set up consortia for public funded projects



YOUR BENEFITS

- Customized acquisition for public funding for your projects
- Identification of potential partners for your demands
- Writing of project proposals



Service

Networking

APPROACH

- Platform to initialize projects within the AZL Network
- New pre-competitive R&D projects
- New cooperations
- Presentation of your innovative products and developments
- Discussion of the AZL strategy, update on new equipment and services
- Strengthen the network between AZL Aachen GmbH partners and the lightweight activities of the RWTH Campus



YOUR BENEFITS

- Access to a unique international industrial partnership network representing the entire value chain
- Access to potential business partners
- One stop contact to the RWTH Aachen University





Service

Marketing, PR, Human Resources

APPROACH

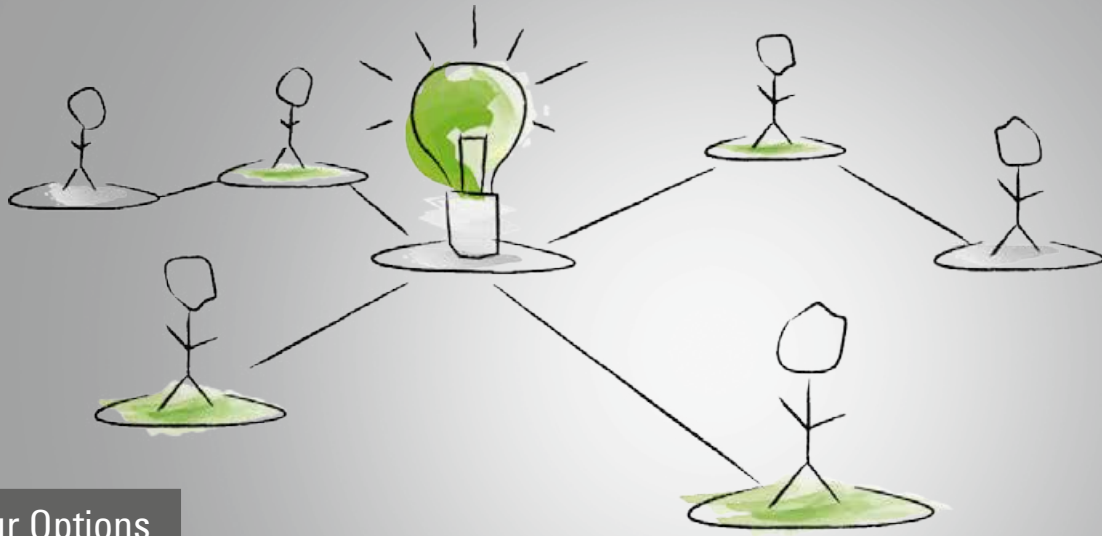
- Setup of publications, presentations, a newsletter, partner meetings related to your innovative products
- Usage of AZL as your business show case
- Internal communication within the AZL Partnership Network on our website
- Identification of new potential employees within our student network according to your individual demands



YOUR BENEFITS

- Marketing and PR activities according to your needs, e.g. individual press releases for your products
- Individual search for your new potential employees





Your Options

AZL Partnership Network



OFFICIAL PARTNER

Number of Employees	Annual Contribution
< 25	2.000, – €
25 – 250	5.000, – €
250 – 500	7.500, – €
> 500	10.000, – €



PREMIUM PARTNER

Annual Contribution
25.000, – €

All described services are included in the AZL partnership.

Continuously Growing Partnership Network

Currently 53 Partner Companies

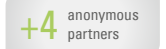
Retrieved February 2015



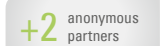
PREMIUM PARTNER



FOUNDING PARTNER



OFFICIAL PARTNER



Your Contacts



DR.-ING. MICHAEL EMONTS

Managing Director
Phone: +49 241 8904-150
michael.emonts@azl-aachen-gmbh.de



DR.-ING. KAI FISCHER

Managing Director
Phone: +49 241 80-23884
kai.fischer@azl-aachen-gmbh.de



DR.-ING. MICHAEL EFFING

Senior Advisor
Phone: +49 241 80-23887
michael.effing@azl-aachen-gmbh.de

AZL
Aachen GmbH
Excellence in lightweight production



Seffenter Weg 201
52074 Aachen
Germany

Phone: +49 241 80-23884
Fax: +49 241 80-22316
info@azl-aachen-gmbh.de

www.azl-lightweight-production.com